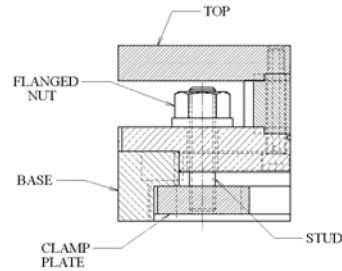


# Square Machine Swivels



## Standard Features

Base Mounting Holes · Low Carbon Steel · Top, Base, Clamp · Engraved Graduations  
 Swivel Table Top rotates on pivoting center bore at 360° graduated in 1° increments  
 Table Tops are ground and machined to 0.001" · 4 Clamp Nuts lock swivel in place

SWIVEL MODEL	SWIVEL SIZE/WIDTH	SWIVEL HEIGHT	SWIVEL CENTER	BASE HEIGHT	BOLT CENTER	MOUNTING BOLTS
SW3	3.00	2.00	1.50	0.75	2.38	(4) 1/4 SCR.
SW4	4.00	2.31	2.00	0.88	3.25	(4) 5/16 SCR.
SW6	6.00	2.50	3.00	1.00	4.75	(4) 3/8 SCR.
SW8	8.00	3.00	4.00	1.12	6.75	(4) 1/2 SCR.
SW10	10.00	3.00	5.00	1.12	8.50	(4) 1/2 SCR.
SW12	12.00	3.50	6.00	1.38	10.50	(4) 5/8 SCR.
SW16	16.00	4.00	8.00	1.62	14.00	(4) 3/4 SCR.
SW20	20.00	4.50	10.00	1.62	17.00	(4) 3/4 SCR.
SW24	24.00	5.00	12.00	2.00	21.50	(4) 1" SCR.

Swivel load carrying capacity is comparable to the same size slide.

## Accessories

Mounting Holes in Top · Nickel Plating · Compounding · Reduced Overall Height



MILWAUKEE  
SLIDE AND  
SPINDLE

## FAMCO MACHINE DIVISION

BELCO INDUSTRIES, INC.

1001-31<sup>ST</sup> STREET

KENOSHA, WISCONSIN 53140

PHONE NO.: 1-262-654-3516

FAX NO.: 1-262-654-0803

e-mail: [SALES@FAMCOMACHINE.COM](mailto:SALES@FAMCOMACHINE.COM)