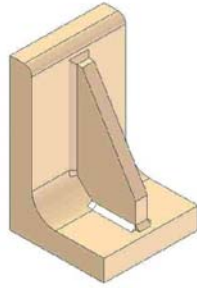
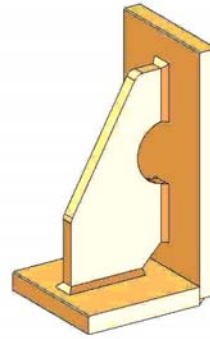


# Machine Angle Plates



2-Part Angle Plate Construction



3-Part Weldment Construction

## **Standard Features**

7 Sizes, 18 Models • Steel, Ground 90° • 2 Sides Ground • Normalized and Sandblasted  
Sides are ground and machined to 0.001" perpendicularity

ANGLE PLATE MODEL	WIDTH	HEIGHT	BASE HEIGHT	ANGLE PLATE THICKNESS	ANGLE PLATE CONSTRUCTION
A23	2.00	3.00	2.00	0.50	ANGLE PLATE
A24	2.00	4.00	2.00	0.50	ANGLE PLATE
A26	2.00	6.00	4.00	0.50	ANGLE PLATE
A34	3.00	4.00	3.00	0.75	ANGLE PLATE
A35	3.00	5.00	3.00	0.75	ANGLE PLATE
A36	3.00	6.00	4.00	0.75	ANGLE PLATE
A46	4.00	6.00	4.00	0.88	WELDMENT
A48	4.00	8.00	4.00	0.88	WELDMENT
A410	4.00	10.00	6.00	0.88	WELDMENT
A412	4.00	12.00	6.75	1.00	WELDMENT
A68	6.00	8.00	4.00	0.88	WELDMENT
A612	6.00	12.00	6.75	1.00	WELDMENT
A616	6.00	16.00	8.75	1.00	WELDMENT
A818	8.00	18.00	9.75	1.00	WELDMENT
A824	8.00	24.00	13.00	1.00	WELDMENT
A1026	10.00	26.00	13.00	1.25	WELDMENT
A1030	10.00	30.00	15.00	1.25	WELDMENT
A1226	12.00	26.00	13.00	1.25	WELDMENT

## **Accessories**

Mounting Holes • Nickel Plating • Compounding • Special Angles and Sizes  
Keyways • Stainless Steel Construction • T-Slots • Extra Gussets



MILWAUKEE  
SLIDE AND  
SPINDLE

## **FAMCO MACHINE DIVISION**

BELCO INDUSTRIES, INC.

1001-31<sup>st</sup> STREET

KENOSHA, WISCONSIN 53140

PHONE NO.: 1-262-654-3516

FAX NO.: 1-262-654-0803

e-mail: [SALES@FAMCOMACHINE.COM](mailto:SALES@FAMCOMACHINE.COM)